

ETK EPU-H

Power emergency supply unit for surgical lamps

GENERAL INFORMATION

In case of a power failure to the halogen surgical lamps, the **emergency power unit ETK EPU-H** allows the automatic change of the power supply to batteries, ensuring that the lamp and its external wall controls remain operative for two hours.

The unit incorporates in a single box, the network supply and the emergency supply, composed of a charger-rectifier and a highquality lead-acid battery, sealed and without gas discharge.

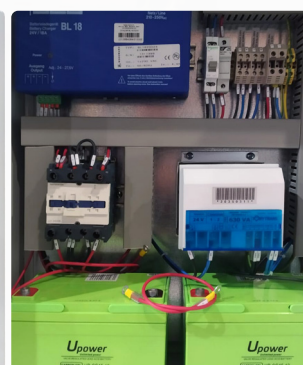
The unit installation is designed for wall mounting in a technical area.

TECHNICAL DATA

Network supply voltage	230 V~ (-10% a +10%)
Frequency	50/60 Hz
Output voltage in presence of the network	24 V~ (nominal)
Output voltage in absence of the network	24 Vcc +10%
Auto switch	< 0.5s
Calibre charger	max. 18A
Permanent intensity of use	16A (250W) 20A (400W) 25A (600W) 32A (800W)
Autonomy	2 hours
Battery type	Lead Sealed Long life
Battery number	2 in series 12 Vcc 40, 44, 75 or 90Ah

REGULATIONS

EN 61000-6-3	EN 61000-4-4
EN 61000-6-2	EN 61000-4-6
EN 61000-4-2	EN 61000-4-8
EN 61000-4-3	



VERSIONS AND DIMENSIONS

REFERENCE	DESCRIPTION	DIMENSIONS LxPxA (mm)
ETK EPU-250H	Emergency Unit 250W	630x500x250
ETK EPU-400H	Emergency Unit 400W	630x500x250
ETK EPU-600H	Emergency Unit 600W	830x600x250
ETK EPU-800H	Emergency Unit 800W	1030x600x250

